

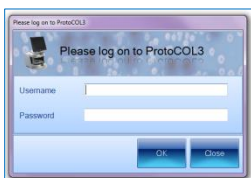
ProtoCOL 3

Colour Classification Batch Set Up - Quick Guide

Start ProtoCOL 3 software

1

Enter



➔ Log on to ProtoCOL 3

2

Position plate

➔ Insert the plate holder, ensuring the plate holder that gives the best contrast between the colony and background is used

➔ Place plate onto plate holder

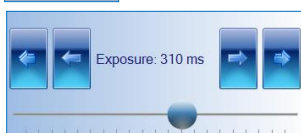
Capture image

3

Click



Slide



Click



➔ Select the image tab and check the live box

➔ Adjust the exposure by increasing/decreasing the sliding scale

➔ Capture image

4

Create batch

Click



➔ Click New Batch

Plate configuration

5

Select



➔ Select Plate Configuration to set plate size, sample volume and threshold. Defaults are Circular plate 90mm, Sample volume 1ml. Change if necessary

Choose an application

6

Select

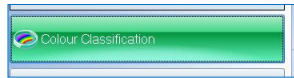


➔ Select Pour Plate

Automatic colour classification

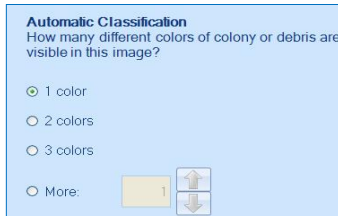
7

Select



Select Colour Classification tab

Select

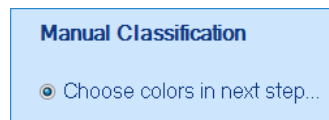


Automatic Classification default is 1 colour. If a total count is required keep 1 colour selected. If differentiation by colour is required, select how many different colours are present on the plate

Manual colour classification

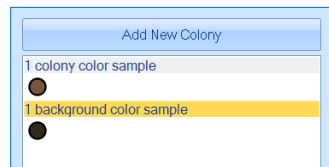
8

Select



To select colours manually, select manual classification and highlight areas of the image that are representative of the colony and background colours.

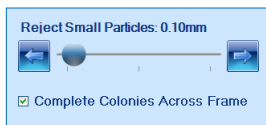
Select



Classification results

9

Slide

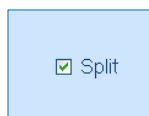


Move slider to the left to accept small particles or to right to exclude small particles



If any colonies are touching select the split function

Check



To distinguish between two colours there may be a requirement to check Remove Fringes Around Colonies to make the colony appear as a solid colour

Check



Click Next

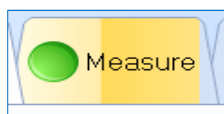


Click Finish

Measure

10

Select



Select the Measure tab

Click



Test measure plate

Click



Assign a plate identification template name

Enter

A screenshot of a text input field with the label 'Designing Batch:' and an empty text box.

Name the batch

ProtoCOL 3 is now ready to make the first measurement

CONTACT SYNBIOSIS:

EUROPE:

Tel: +44 (0)1223 727125

Email: support@synbiosis.com

www.synbiosis.com

USA:

Tel: 800 686 4451/301 662 2863

Email: support@synbiosis.com

P3CC0818